

# Monolithic crystal filter

## MQF21.4-0750/03



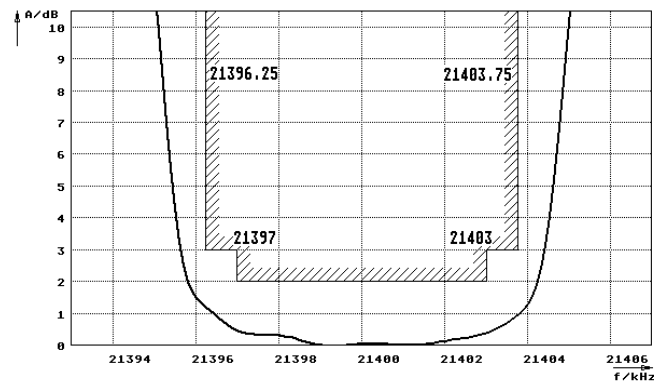
### Application

- 6 pol filter
- i.f.- filter
- use in mobile and stationary transceivers

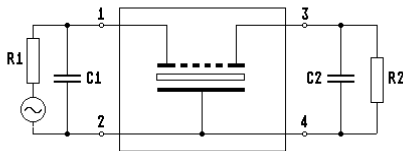
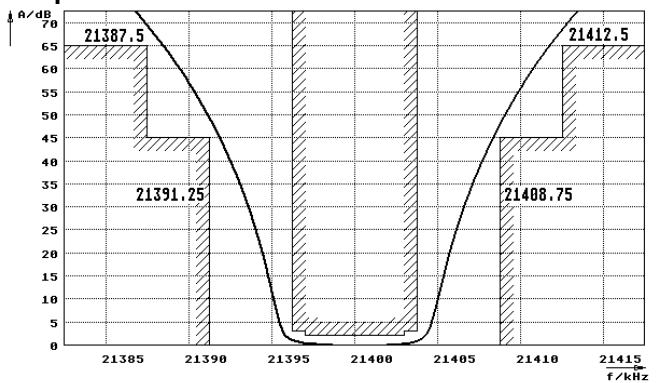
Limiting values		Unit	Value
Nominal frequency	$f_0$	MHz	21.4
Insertion loss		dB	< 3.5
Pass band at 3.0dB		kHz	$\pm > 3.75$
Ripple in pass band	$f_0 \pm 3 \text{ kHz}$	dB	< 2.0
Stop band attenuation	$f_0 \pm 8.75 \text{ kHz}$	dB	> 45
	$f_0 \pm 12.5 \text{ kHz}$	dB	> 65
Alternate attenuation		dB	> 65 except spurious
Terminating impedance Z			
R1  C1		Ohm/pF	1600    3
R2  C2		Ohm/pF	1600    3
Operating temp. range		°C	-25... +70
Storage temp. range		°C	-45... +85
Environment conditions			according to CF001

### Characteristics MQF21.4-0750/03

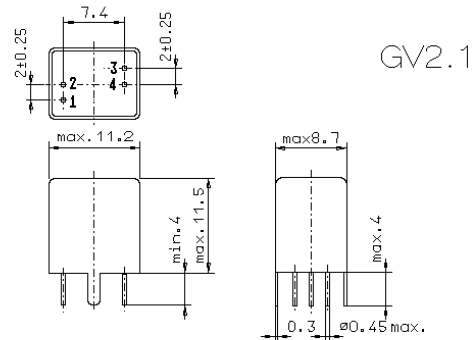
#### Pass band



#### Stop band



- Pin connections:
- 1 Input
  - 2 Ground
  - 3 Output
  - 4 Ground



GV2.1

RoHS compliant