

Monolithic crystal filter

MQF10.7-3000/19



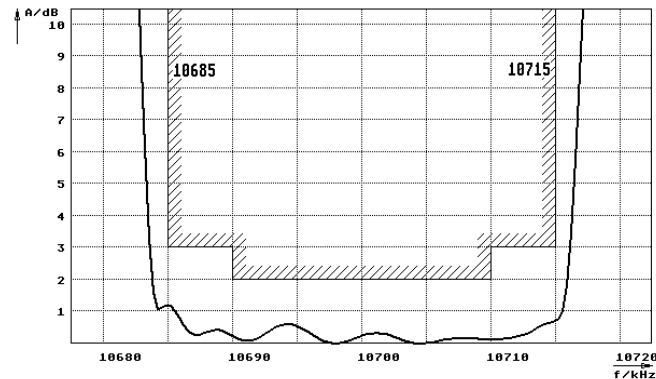
Application

- 8 pol filter
- i.f.- filter
- use in mobile and stationary transceivers

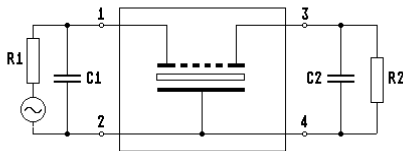
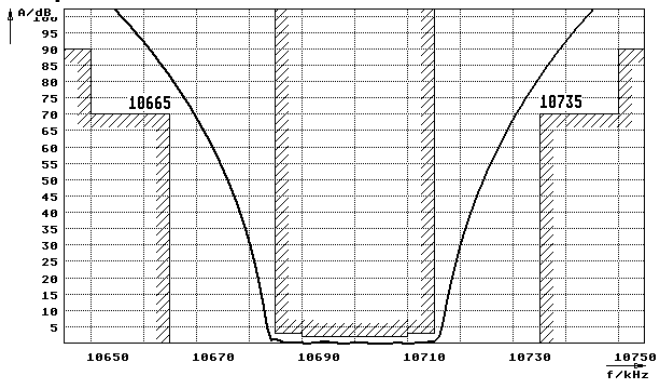
Limiting values		Unit	Value
Center frequency	f_0	MHz	10.7
Insertion loss		dB	≤ 3.5
Pass band at 3.0 dB		kHz	$\pm \geq 15.00$
Ripple in pass band	$f_0 \pm 10.00$ kHz	dB	≤ 2.0
Stop band attenuation	$f_0 \pm 35$ kHz	dB	≥ 70
	$f_0 \pm 50$ kHz	dB	> 90
Alternate attenuation	$f_0 \pm 50 \dots 500$ kHz	dB	> 90 except spurious
	Terminating impedance Z		
R1 C1		Ohm/pF	5600 -1
R2 C2		Ohm/pF	5600 -1
Operating temp. range		$^{\circ}\text{C}$	-40... +80

Characteristics MQF10.7-3000/19

Pass band



Stop band



- Pin connections:
- 1 Input
 - 2 Ground-Input
 - 3 Output
 - 4 Ground-Output

