

# Monolithic crystal filter

## MQF10.7-3000/01



### Application

- 2 pol filter
- i.f.- filter
- use in mobile and stationary transceivers

### Limiting values

		Unit	Value
Center frequency	$f_0$	MHz	10.7
Insertion loss		dB	$\leq 1.5$
Pass band at 3.0 dB		kHz	$\pm 15.00$
Ripple in pass band	$f_0 \pm 10.00$ kHz	dB	$\leq 0.5$
Stop band attenuation	$f_0 \pm 50$ kHz	dB	$\geq 15$
Alternate attenuation	$f_0 + 0.3...1$ MHz	dB	$> 30$
	$f_0 - 0.3...1$ MHz	dB	$> 40$
Spurious responses	$f_0 + 50...300$ kHz	dB	$> 15$

### Terminating impedance Z

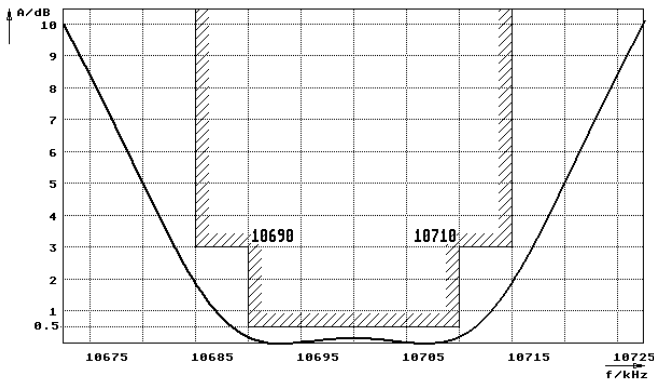
R1    C1	Ohm/pF	5000    0
R2    C2	Ohm/pF	5000    0

### Operating temp. range

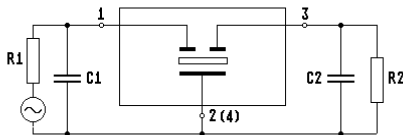
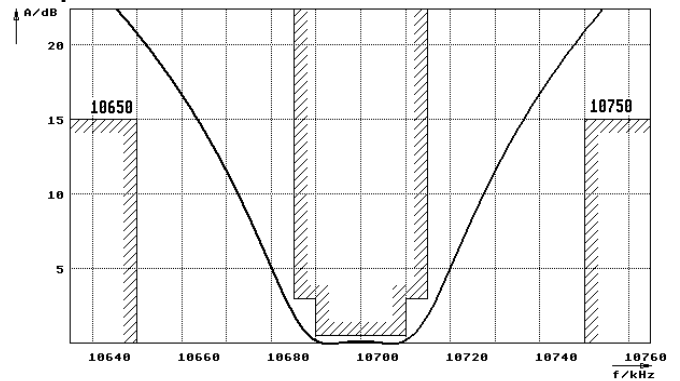
° C -20... +70

### Characteristics MQF10.7-3000/01

#### Pass band



#### Stop band



- Pin connections:
- 1 Input
  - 2 Ground-Input
  - 3 Output
  - 4 Ground-Output

